



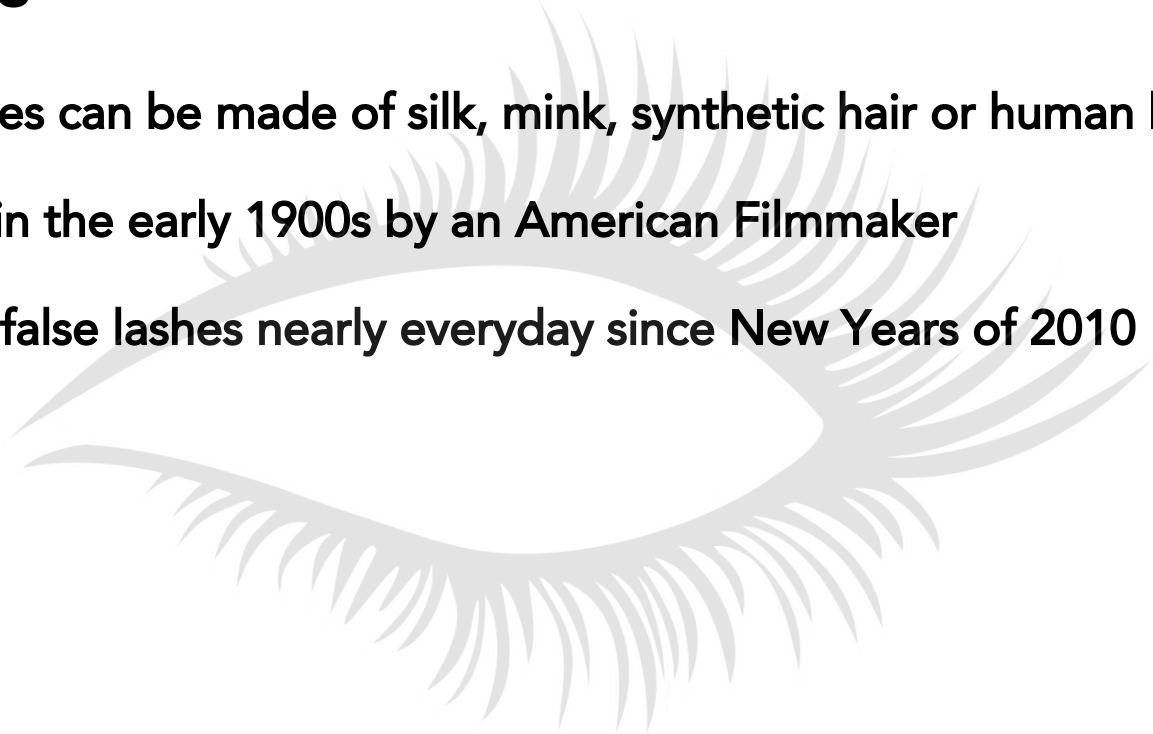
Applying False Lashes

Fun Facts

#1: False lashes can be made of silk, mink, synthetic hair or human hair

#2: Invented in the early 1900s by an American Filmmaker

#3: I've worn false lashes nearly everyday since New Years of 2010



Things You Need to Apply Falsies:

1. Latex free lash glue or any lash glue
2. Tweezers or Lash Applicator
3. A pair of lashes





How To Apply False Lashes



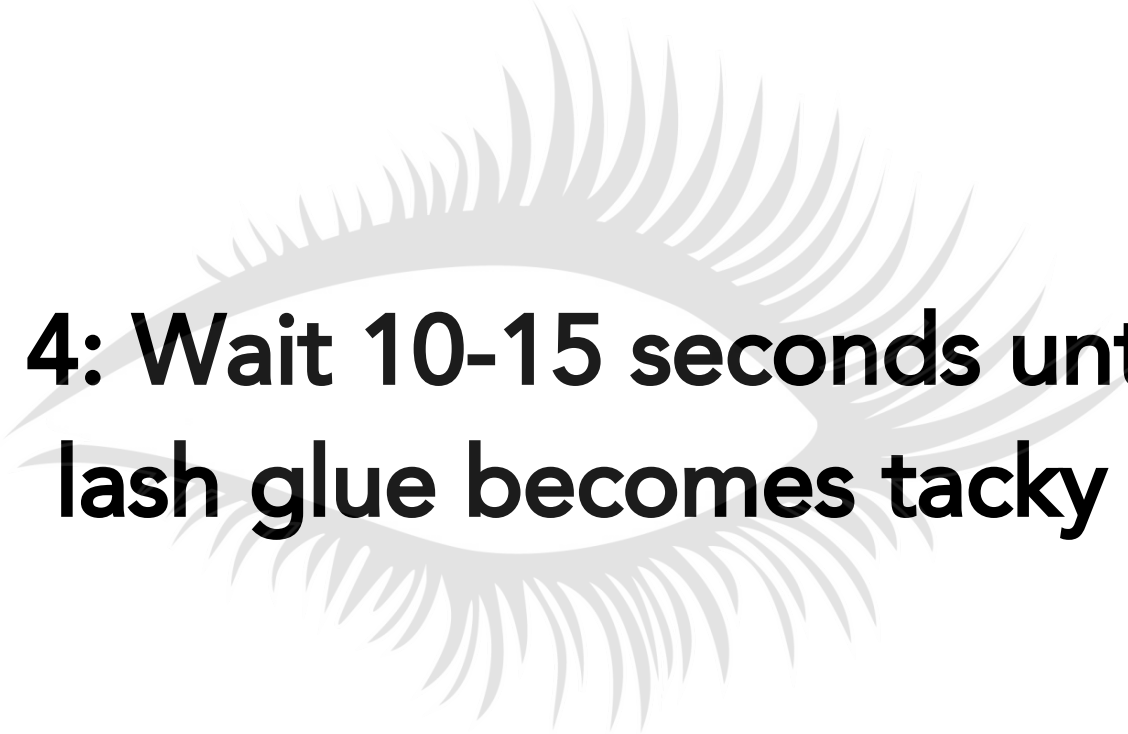
Step 1: Remove lashes from packaging



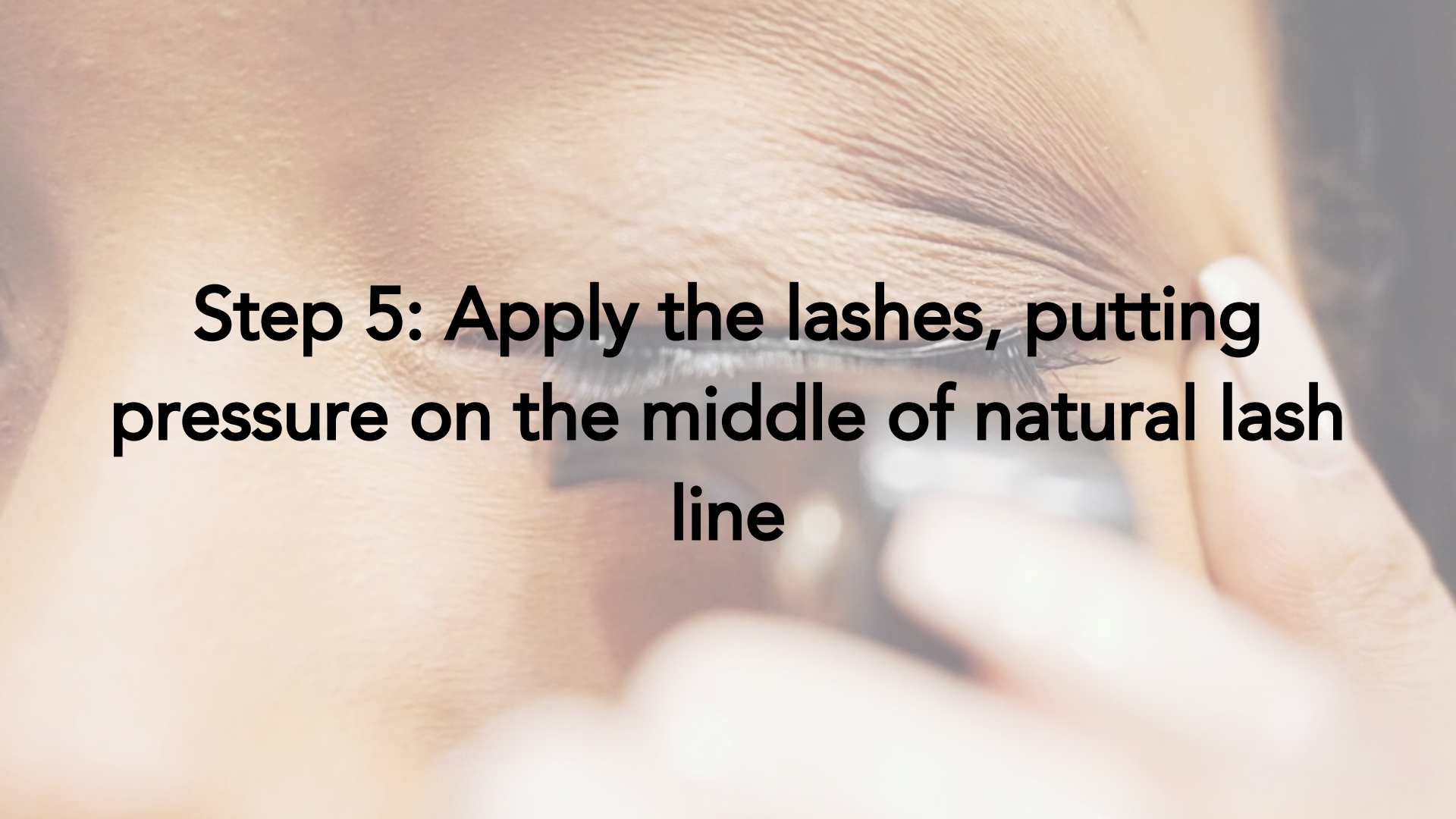
**Step 2: "Clamp" lashes with tweezers or
lash applicator**

A close-up photograph showing a hand holding a black plastic lash applicator brush. The brush has a curved head with fine, dark bristles. A thick, white adhesive is being applied to the bristles. In the background, a white tube of 'The LashGrip' adhesive is visible, with the brand name printed on it. The background is slightly blurred, showing a white surface and a white container.

Step 3: Apply glue to lash band



**Step 4: Wait 10-15 seconds until the
lash glue becomes tacky**

A close-up photograph showing a hand applying a single eyelash to a person's eye. The hand is positioned to press the lash onto the middle of the natural lash line. The background is a soft, out-of-focus skin tone.

Step 5: Apply the lashes, putting pressure on the middle of natural lash line

A close-up photograph of a person's eye. A hand is visible, with fingers applying pressure to the outer corner of the eye. The text 'Step 5.5: Apply pressure to the outside edges' is overlaid on the image in a bold, black, sans-serif font.


Step 5.5: Apply pressure to the outside edges



Step 6: You're done!

Fun Fact #4:

Putting lashes on yourself is a lot easier than putting them on other people



For More Tips:

<http://www.samlovesglam.com/blog>

